

Carmel Township

Eaton County Michigan



West Carmel and Millerburg Cemeteries

WINTER PERIOD: NOVEMBER 1 TO MARCH 31

- ◆ Artificial arrangement, wreaths and grave blankets may be placed on grave sites.
- ◆ Decorations remaining after March 31 will be removed and disposed of by the Sexton.

SUMMER PERIOD: APRIL 1 TO OCTOBER 31

- ◆ Artificial flowers will not be allowed during this period.
- ◆ Cut flowers must be placed in above ground Urns.
- ◆ Containers such as glass jars, tin cans, paper fast food cups, plastic milk containers, etc are prohibited.
- ◆ All flowers will be removed when they become unsightly.
- ◆ Potted plants will be allowed for seven (7) days before and seven (7) days after these holidays: Easter, Mothers Day, Fathers Day, Memorial Day, July 4th and Labor Day. After these two (2) weeks they will be removed.
- ◆ No landscaping material and/or alterations to site will be allowed.



Carmel Township

1959 Kalamo Hwy.
Charlotte, MI 48813

Phone: (888)-805-6182

www.carmeltownship.org

Hours:
Dusk to Dawn

The Carmel Township Cemeteries, which include Millerberg and West Carmel Cemeteries, are operated under the management of the Township Board of Trustees. The general rules and regulations apply to any person or persons entering the cemetery grounds for any purpose including but not limited to persons owning burial rights, persons visiting grave sites or attending ceremonies, and contractors performing work within the cemetery. Access to Cemetery Grounds is permitted between Dawn and dusk.

West Carmel Cemetery • Millerburg Cemetery



West Carmel Cemetery
Millerburg Cemetery

For more
Information:
Call:
(888)-805-6182



How can we help . . .

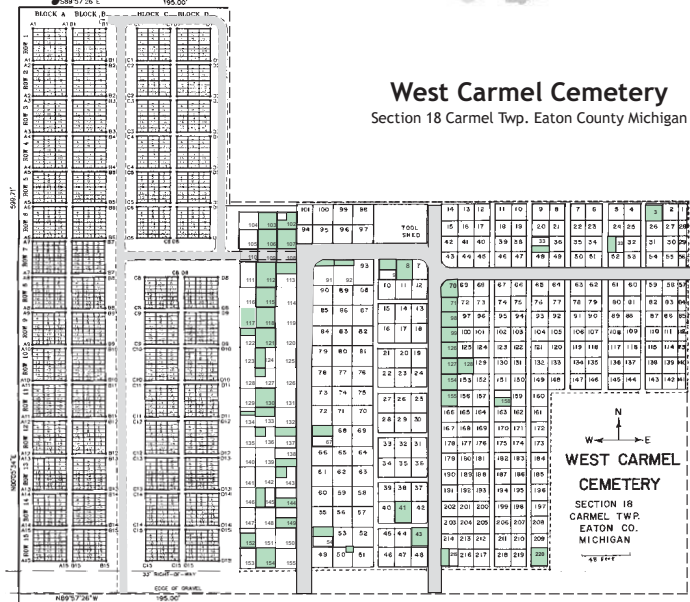


of the cemetery that was sold by Paul and Wilda Bust to Carmel Township. West Carmel Cemetery is about six acres in size and located at the northwest corner of Ainger and Carlisle roads in section 18 of T2N, R5W, Eaton County, Michigan.



West Carmel Cemetery

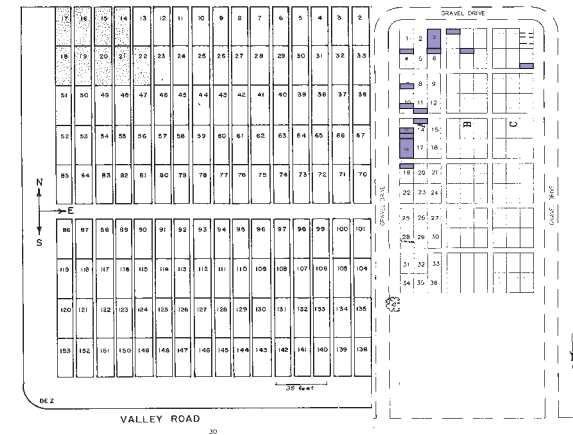
The first parcel of land comprising a three-fourths acre part of the present day West Carmel Cemetery was deeded by John Ells and Sally, his wife, to the Board of Health, Carmel Township on 2 June 1849. Latter the City of Charlotte deeded the same parcel to Carmel Township on 26 July 1871. On December 30, 1948 a segment was added of fifty-foot strip along the west side



Millerburg Cemetery

The cemetery was formed as a private cemetery association with B.F. Bisel, L.D. Griest and William Casher as trustees. First called "The Carmel Union Cemetery Association" came to become called Union or East Carmel Cemetery. Two acres of land were purchased from Ira and Harriet M. Foster on April 14, 1873. In 1926 the cemetery was turned over to Carmel Township for administration and upkeep.

Millerburg Cemetery
Sec 2 Carmel Twp. Eaton County Michigan



1959 Kalamo Hwy.
Charlotte, MI 48813
Phone: (888)-805-6182
www.carmeltownship.org

Costs are for township residents only !

Cemetery Lots cost	\$150.00	Disinterment:	\$500.00
Opening /close grave	\$300.00	Saturday Grave Opening	add \$50.00
Cremation open/close grave.	\$150.00	Sunday Funeral	add \$100.00
		Head Stone Foundations	\$0.25/sq in